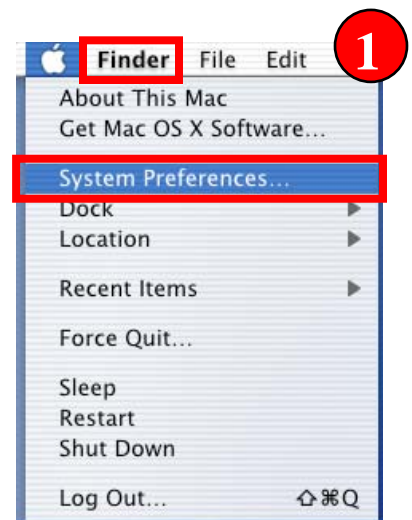


Help Document Series: Setting up DHCP in Mac OS X

These instructions will walk you through setting up your Apple computer running Mac OS 10.4.x to use DHCP. This is necessary for your computer to connect to the Clark Network. You will need an active internet connection on the Clark campus.

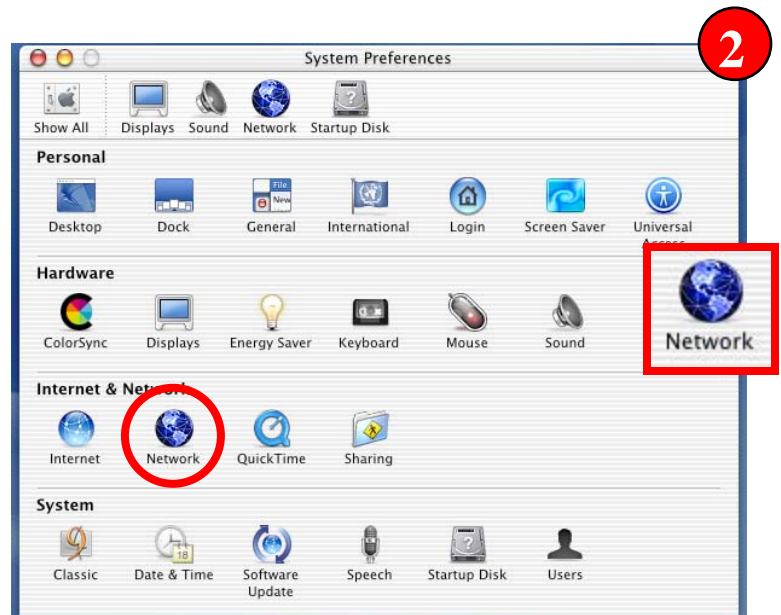
Step 1

Quit/close all applications that are running so that you are working in the **Finder**. Click the Apple icon in the top menu bar to open a drop-down menu and then select the **System Preferences...** option.



Step 2

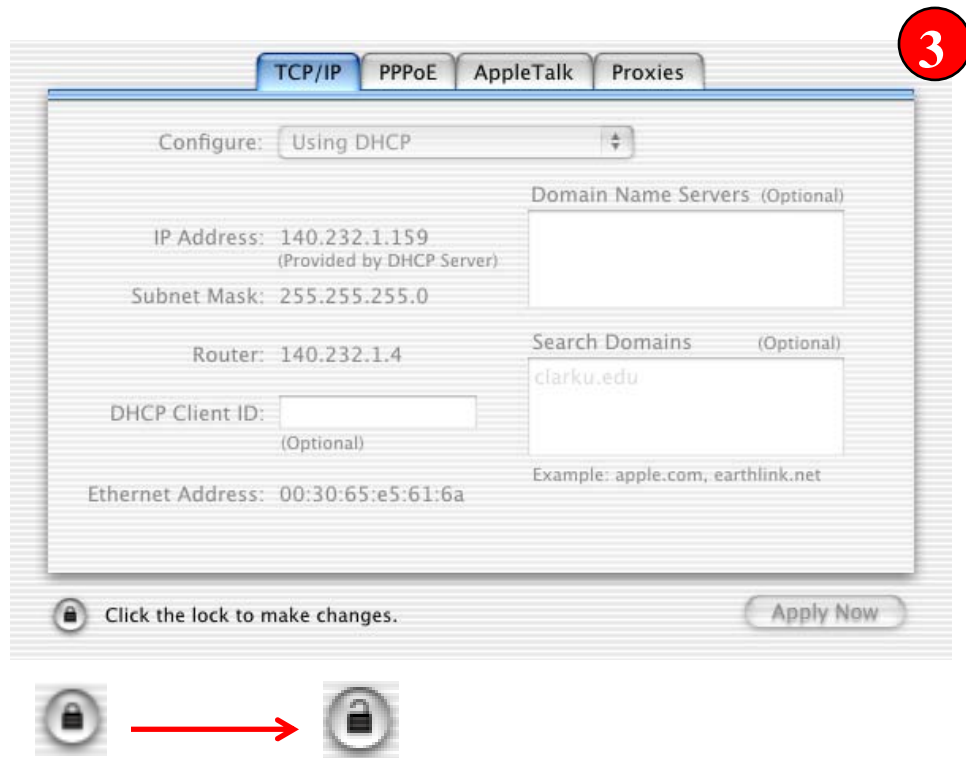
Under the **Internet & Network** section of **System Preferences**, click on the **Network** icon.



Step 3

If the **Network** window is opaque, you will not be able to make any changes to your settings until you unlock the window. If it is not opaque, you can skip to **Step 4**.

Clicking the **Lock** button in the lower left corner of the window will allow you to make changes in the network settings. You will be prompted for your administrator username and password – these are unique to your computer. Once you have entered those credentials, the window will no longer be opaque, and you can make the necessary changes.



Step 4

Set the **Show** menu to **Built-in Ethernet**. This will change your view to the information pertaining to your hardwired Ethernet card. Set the **Configure** menu to **Using DHCP**. Click the **Apply Now** button to make these new settings active.

