



CLARK UNIVERSITY

Graduate Studies | 2023-2024

Welcome to Clark University

Academic Excellence — Career Advantage — Global Reputation



Students from around the world choose Clark University for our globally ranked and recognized graduate programs that deliver the knowledge, skills, and confidence you need to succeed.

Since our founding in 1887, Clark has built a reputation for rigorous academics, hands-on learning, and research that addresses the social and scientific challenges facing the world today.

Why Choose Clark University?

- Small class sizes allow you to connect one-on-one with world-renowned faculty who are experts in their fields.
- Personalized career services focused on professional development, internships, and employment.
- A wide range of STEM degree programs that deliver practical skills and employment opportunities.
- A welcoming campus environment that embraces diversity and inclusion.
- Generous tuition scholarships.

If you want to advance your career, or build a new one, we invite you to join our community of creative, passionate, and intellectually engaged students.

Globally Ranked and Recognized



U.S. News & World Report

Top 100 National Universities

#106 in "Best Business Schools"

#38 in the U.S. for "Best Value Schools"



Times Higher Education

#33 "World's Best Small Universities"



AACSB accredited, a distinction earned by less than 5% of business schools worldwide.



Kiplinger's Personal Finance

recently ranked #28 in "Best Values in Private Universities"



Princeton Review

"Best College" list

#3 "Schools Making an Impact"

#9 for MFA in game design



QS World University Rankings

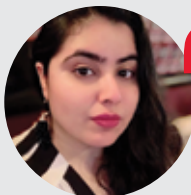
"Top University" list



Tushi Kaul

MBA '18

Supply Chain Buyer,
Instron Corporation



At Clark, I made friends from all over the world. Now, at work, when I talk to different suppliers from across the globe, I am able to build a connection easily."

Areas of Study



SCHOOL OF MANAGEMENT

Accelerate your career and boost your earning potential as you prepare for a lifetime of leadership success founded on the principles of social responsibility, sustainability, and ethical business practice.

Master of Business Administration (MBA)** (F/S)

Master of Business Administration (MBA) Online (F/S)

M.S. in Accounting* (F)

M.S. in Accounting Analytics* (F)

M.S. in Business Analytics* (F/S)

M.S. in Finance* (F/S)

M.S. in Management (F/S)

M.S. in Marketing* (F/S)

M.S. in Marketing Analytics* (F/S)

MBA/M.S. in Accounting* (F/S)

MBA/M.S. in Finance* (F/S)

SCHOOL OF PROFESSIONAL STUDIES

Move your career ahead and be in demand with degrees that meet the evolving needs of the global workplace. Our hands-on approach to learning, personalized advising, and career support can help you increase your earning potential, rise to a leadership position, or launch a new career.

M.S. in Communication (F/S)

M.S. in Computer Science* (F/S)

M.S. in Data Analytics* (F/S)

M.S. in Information Technology* (F/S)

M.S. in Project Management* (F/S)

Master of Public Administration (MPA) (F/S)

M.S. in Sports and Esports Administration (F/S)



BECKER SCHOOL OF DESIGN AND TECHNOLOGY

Explore your passion for interactive media with our innovative studio-based curriculum. Prepare for success in the fields of game development and interactive media, or a career path in higher education, teaching, and research.

Master of Fine Arts in
Interactive Media (MFA)* (F)

INTERNATIONAL DEVELOPMENT, COMMUNITY, AND ENVIRONMENT

We share your passion for the world's biggest challenges. Gain the critical career knowledge, skills, and practical experience needed to address the social, economic, and environmental justice issues that face our communities and the world.

M.S. in Environmental Science and Policy* (F/S)

M.S. in Geographic Information Science (GIS)* (F/S)

M.A. in Community Development and Planning (F/S)

M.A. in International Development (F/S)

F | Fall semester start

S | Spring semester start

Su | Summer semester start

*STEM Designated Program:

International students who graduate with a STEM degree today may be eligible to remain in the U.S. for up to 36 months on Optional Practical Training (OPT).

**STEM-designated MBA concentrations include Finance, as well as Information Management and Business Analytics.

GRADUATE ARTS AND SCIENCES

Engage with an intimate community of international scholars in master's-level study and research ranging from practice-intensive urban teaching to reading literature focused on personal development and our roles in society. In our doctoral programs, collaborate with some of the country's most innovative thinkers on substantive research, publications, and public presentations.

M.A. in English

M.A. in Teaching (Su)

Ph.D. in Biochemistry

Ph.D. in Biology

Ph.D. in Chemistry

Ph.D. in Economics

Ph.D. in Geography

Ph.D. in History
(Holocaust and Genocide Studies)

Ph.D. in Genocide Studies

Ph.D. in Physics

Ph.D. in Psychology
(Clinical, Developmental, and Social)

Unless otherwise noted, graduate Arts and Sciences programs start in the Fall semester.



Gio Almuarrawi

M.S. IT '20

VP, Blockchain, Cybersecurity,
Risk Management,
JPMorgan Chase & Co.



I needed a program to cover different aspects of IT, and that's what I found in the Clark program. Diversity, the types of courses, and their quality — that's what attracted me to Clark."

Master the English Language

Earn a graduate degree with the support of Clark University's American Language and Culture Institute (ALCI).

We are committed to helping you with your English language skills so you can achieve success — academically, professionally, and personally.

Study in America With Confidence

Develop the English skills you need to get the degree you want. ALCI programs provide language instruction, verbal and written practice, extra- and cocurricular support, and community engagement.

English Programs for Students at All Levels

- Our **Graduate Pathway** program allows you to reach your English language learning goals while earning credits toward a Clark degree. In the Graduate Pathway program, you are able to finish your degree on time and with confidence.
- The **English for Academic Success** program prepares students for admission to a Clark Pathway Program or directly into a degree program by focusing on the specific skills you need to succeed in a U.S.-based classroom.

Minimum English Test Scores	TOEFL <65 IELTS <5.5 Duolingo <90	TOEFL 65 IELTS 5.5 Duolingo 90	TOEFL 75 IELTS 6.0 Duolingo 105 Completion of English for Academic Success Level 4	TOEFL 85 IELTS 6.5 Duolingo 120 See sub-score details in "Get Started" section.
Your Program Options	English for Academic Success Levels 1-3	English for Academic Success Level 4	English for Academic Success Level 5 OR Graduate Pathway Program for certain degrees	Meets language requirement for Graduate Degree Program admission

Each level is one semester.

Placement is determined by Duolingo scores and writing and speaking samples.

Advance Your Career

Eric Yao

MSF '16

Senior Associate,
Deloitte



You really need to network with someone who works in the industry, whether you plan to stay in the U.S. or go back home. Clark Career Services hosts a number of networking events with alumni who are willing to help you with your job search.”

Clark University is the launchpad to the career you want.

Your journey starts with rigorous classroom academics taught by accessible and supportive faculty. It is complemented by internship opportunities that give you hands-on, real-world experience. And it is accelerated by a Career Services Program dedicated to your professional development, internship assistance and preparation, and eventual employment.

- Participate in Clark’s annual fall and spring career fairs for job and internship opportunities with 50+ visiting employers.
- Attend panel discussions with accomplished alumni.
- Check out our annual Alumni-in-Residence Day, which brings numerous alumni to campus for a day of career dialogue and networking with students.
- Attend student development conferences, sponsored by our alumni, for educational opportunities on and off campus.

Apoorva Arbooj

M.S. Data Analytics '21

Integration Engineer,
Luma Health,
SPS Peer Advisor



One reason I chose Clark is the professors. They combine textbook learning and years of research with firsthand experience working in the industry. They helped me bridge the gap between academics and industry.”

Our alumni work for top-ranked companies worldwide.



In the Heart of New England: Worcester, Massachusetts

Clark University's beautiful campus is located in the heart of New England's second-largest city, Worcester, Massachusetts.

Worcester is a thriving center of business and industry, education, culture, and transportation. Our location offers professional opportunities by day, easy access to outdoor recreation, and an exciting entertainment and restaurant scene at night.

Worcester's diverse population is more than 20 percent immigrants, and the city's rich cultural landscape continues to shape Worcester's identity into a colorful and vibrant place to live and learn.

Clark University has a long history of institutional commitment to the Worcester community and to our Main South neighborhood, helping students connect with local organizations for academic and cocurricular experiences.

Highlights:

- Recently ranked among "150 Best Places to Live" by *U.S. News & World Report*.
- Boston's Logan International Airport with 40 airlines that fly nonstop to more than 100 domestic and international destinations.
- Worcester's regional airport (just 3 miles from downtown) offers regular flights to regional hubs.
- Public transportation, including 20 trains to and from Boston daily — a one-hour trip.
- Numerous arts and cultural destinations, including the Worcester Art Museum, showcasing masterpieces from El Greco, Monet, Rembrandt, Picasso, Van Gogh, and Gauguin.
- Parks and open spaces throughout the city, and easy access to outdoor recreation in central and coastal Massachusetts.
- Sports teams to cheer on include the Worcester Red Sox (minor-league baseball), Worcester Railers (hockey), Worcester Bravehearts (baseball), and two (American) football teams: the IFL Pirates and the semi-professional Wildcats.



1 HOUR
to Boston

4 HOURS
to New York City

HOME TO 11
Local Colleges
& Universities



Clark is welcoming to all, and provides a range of resources to help you immerse yourself in our academic community.

INTERNATIONAL CENTER AT CORNER HOUSE

The International Center (IC) is centrally located on campus and provides a home away from home for Clark's international student community. The IC advises on a variety of matters, including immigration, social, financial, academic, and personal concerns related to daily life in the United States. The IC also hosts events throughout the year that will help you settle in and make new friends.



GRADUATE HOUSING

Most graduate students choose to live in off-campus apartments. You'll find a variety of housing options near campus as well as in downtown Worcester and the surrounding areas.

Clark offers limited graduate housing featuring furnished townhouse-style apartments.

CAMPUS SAFETY 24/7

Clark University's Police Department is on duty 24 hours a day, seven days a week, to ensure a safe campus for all. Officers are certified Massachusetts State Special Police Officers and police academy trained.

CLARK RIDE

This student safety escort service offers free transportation to area locations, including on- and off-campus residences, grocery stores, pharmacies, and restaurants.

EVENTS, CLUBS, AND ACTIVITIES

Throughout the academic year, campus is busy with academic and cultural events that are free and open to all students. Graduate students participate in student organizations, professional associations, honor societies, and volunteer opportunities. Schools and departments also host guest and alumni speakers, conferences, and career and social events.

STAYING FIT

Our on-campus athletic and fitness facilities will help you stay healthy, fit, and mentally grounded. The Bickman Fitness Center features cardio and weight equipment, as well as group fitness classes.



Get Started

Join our global community of passionate scholars whose creativity, intellectual determination, collaborative spirit, and commitment to progress are transforming lives in the neighborhood and around the world. You've found the right program for you; now, it's time to apply!

ADMISSION REQUIREMENTS

- Online application:
clarku.edu/gradapply
- Application fee (nonrefundable): \$75
- Personal statement
- Résumé
- Letters of recommendation (two are usually required)
- All academic transcripts*
- GMAT/GRE test scores (as required for SOM and Ph.D. programs — see website for waiver eligibility)

I-20 DOCUMENTS

Admitted students who have confirmed enrollment will receive support from Clark's International Students and Scholars Office to complete the documentation for your I-20.

ENGLISH LANGUAGE REQUIREMENTS

English test scores are required for international applicants whose native language is not English:

- TOEFL (ETS code 5969): 85 overall, sub-score minimum of 20, *or*
- TOEFL: ITP Plus Scores, *or*
- IELTS: 6.5 overall, sub-score minimum of 6, *or*
- PTE: 61 overall, sub-score minimum of 55, *or*
- Duolingo: 120, sub-score minimum of 100, *or*
- Completion of ELS 112, *or*
- Completion of EC English B2+ Pre-Advanced Level

See Admissions website for details and list of English test-exempt countries.

*Unofficial transcripts can be provided for the application review. Official final transcripts, including confirmation of the earned degree, are required prior to enrollment.

PRIORITY APPLICATION PERIODS AND DEADLINES

Our priority deadlines ensure students receive the earliest possible admission decision and scholarship review. Clark releases all admission decisions on a rolling basis within two to four weeks of application completion.

SCHOOL OF MANAGEMENT | SCHOOL OF PROFESSIONAL STUDIES INTERNATIONAL DEVELOPMENT, COMMUNITY, AND ENVIRONMENT

SPRING 2024	Application Open June 21, 2023	Priority Deadline August 15, 2023	Final Deadline October 16, 2023
SUMMER 2024	Application Open August 15, 2023	Priority Deadline April 4, 2024	Final Deadline May 15, 2024
FALL 2024	Application Open August 15, 2023	Priority Deadline February 15, 2024	Final Deadline June 3, 2024

PH.D. PROGRAMS | M.A. IN ENGLISH | M.A. IN TEACHING

Application deadlines December 15 - January 15, depending on program
See website for full details.



2023-24 GRADUATE TUITION

SCHOOL OF MANAGEMENT

- MBA: \$58,200 (1.5-year program)
- MBA Online: \$42,000 (2-year online program)
- M.S. in Accounting and M.S. in Accounting Analytics: \$62,700 (1.5-year program)
- M.S. in Business Analytics: \$57,475 (1.5-year program)
- M.S. in Finance and M.S. in Marketing Analytics: \$52,250 (1.5-year program)
- M.S. in Management and M.S. in Marketing: \$48,500 (1.5-year program)

INTERNATIONAL DEVELOPMENT, COMMUNITY, AND ENVIRONMENT

- M.S. in Geographic Information Science (GIS): \$72,420 (2-year program)
- Other IDCE programs: \$60,350 (1.5-year programs)

SCHOOL OF PROFESSIONAL STUDIES

- M.S. in Computer Science: \$39,500 (1.5-year program)
- Other SPS programs: \$31,050 (1.5-year programs)

BECKER SCHOOL OF DESIGN & TECHNOLOGY

- MFA in Interactive Media: \$72,750 (2-year program, 15 units)

ENGLISH FOR ACADEMIC SUCCESS

Tuition: \$11,220 (per semester)

GRADUATE PATHWAY PROGRAM

Tuition: \$16,075 (per semester)

Estimated Additional Expenses

Housing and meals: \$16,000

Books and supplies: \$1,000

Health insurance: \$2,390

Personal expenses: \$1,000

Additional fees vary by program.

GENEROUS SCHOLARSHIPS AVAILABLE

Clark University offers merit-based scholarships to candidates with strong credentials. All applications are reviewed for scholarship eligibility during the admissions process.

Visit clarku.edu/gradtuition for graduate tuition, scholarship, and student loan details.



Worcester, Massachusetts, USA

Say Hello!

Email: gradadmissions@clarku.edu

Phone: 508-793-7373

Or visit us on the web:

clarku.edu/graduate

clarkuniversity.cn



WECHAT



WEIBO