

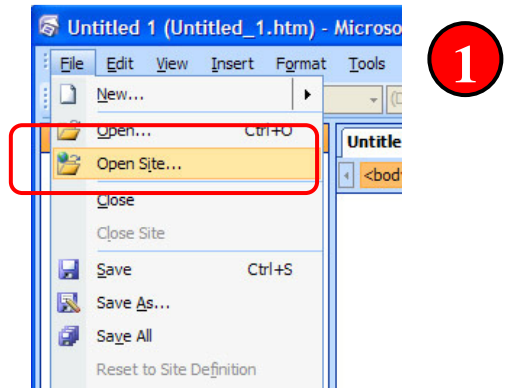


INFORMATION TECHNOLOGY SERVICES

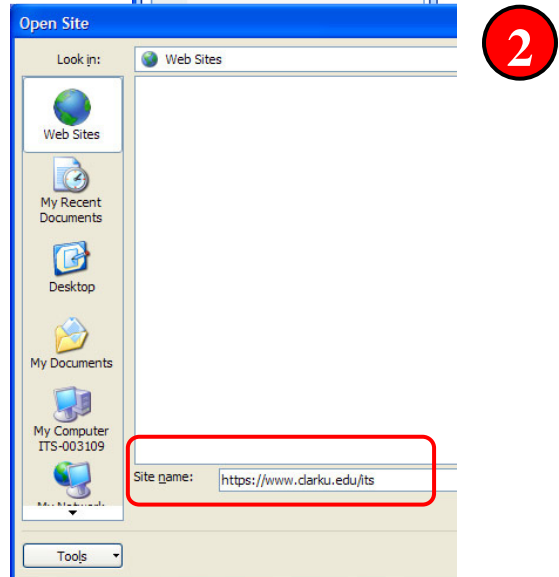
Help Document Series: Connecting to a website in SharePoint Designer 2007

This documentation will provide instructions for connecting to a website you need to edit with Sharepoint Designer 2007.

Step 1: Go to File-Open Site



Step 2: Type the name of the site in the “Site name” field, making sure you use **https://**

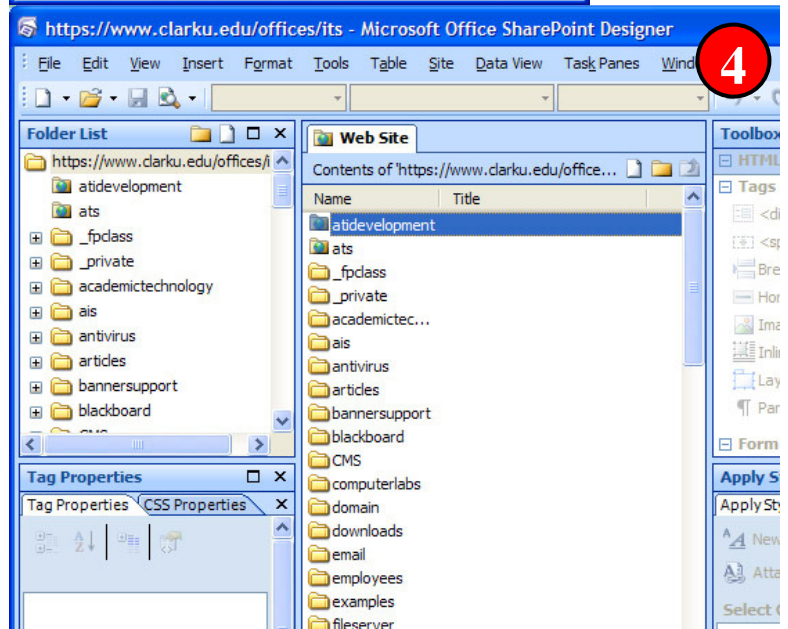


If you have any questions, or require further assistance, please contact the ITS Help Desk at **508-793-7745** or helpdesk@clarku.edu.

Step 3: You will be prompted for credentials. Put in your Clark username and your password and click “ok.”



Step 4: Your web will open.



If you have any questions, or require further assistance, please contact the ITS Help Desk at **508-793-7745** or helpdesk@clarku.edu.