


Help Document Series: Accessing ClarkWiFi on Apple OS X


This document will walk you through the process of accessing the Clark Wireless Network, ClarkWiFi. You will need a computer with at least an Airport or Airport Extreme Card with Firmware 3.3 and Software 3.3 or better.

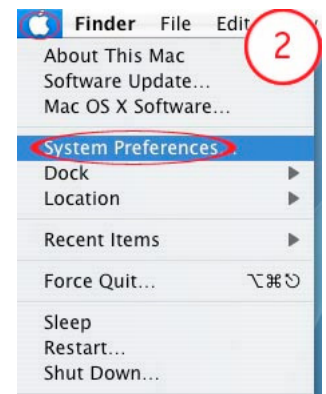
Step 1.

Click on the wireless broadcast button  in the upper right to open a dropdown menu. Check and make sure that the Airport card is on. You can tell that the card is on as the word “AirPort: On” is greyed out.



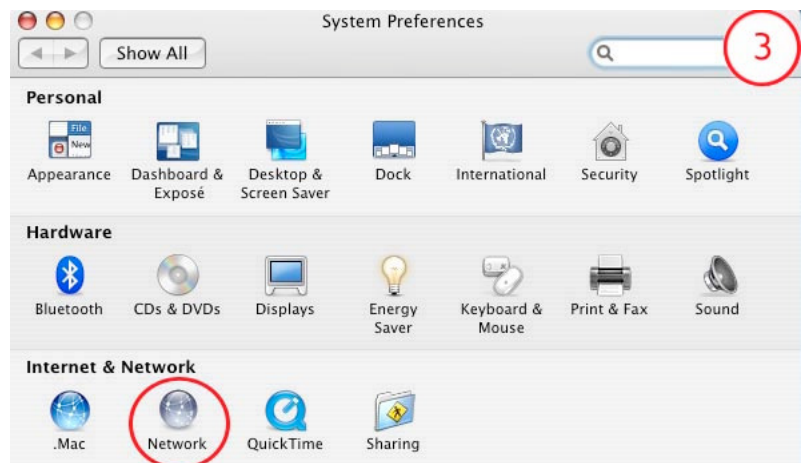
Step 2.

Click on the Apple icon  in the upper left to open the drop-down menu. Click on “System Preferences...” to select it and open a new window, “System Preferences”.



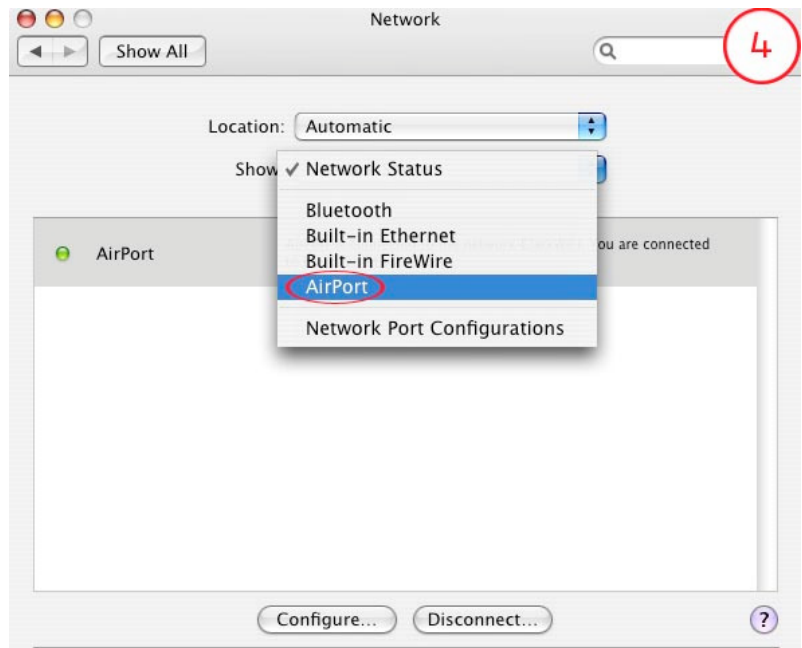
Step 3.

In the “System Preferences” window, click on the icon labeled “Network” and the open window will transition to the “Network” configuration window.



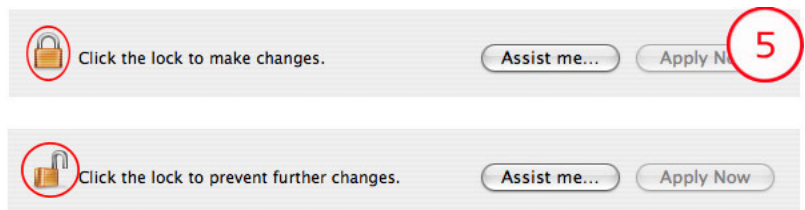
Step 4.

In the “Network” window, there are several fields. Look for the “Show” menu, and click on the selector next to it to open a dropdown menu. Select “AirPort” to show the wireless card configuration options.



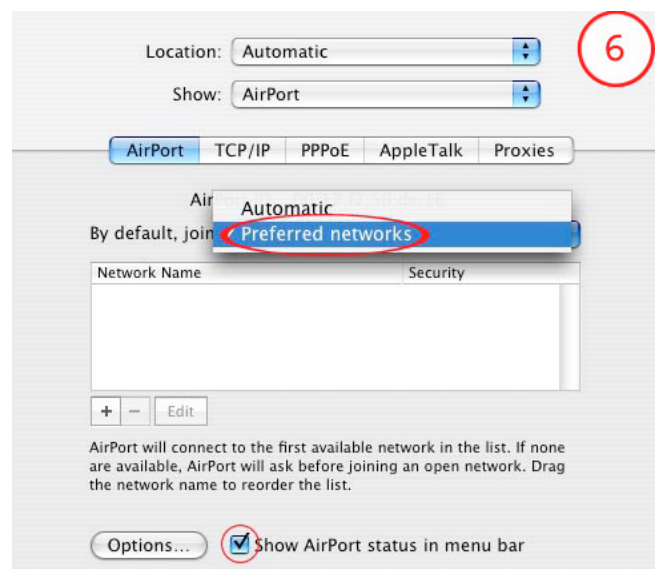
Step 5.

At this point it is important to make sure that you have authenticated yourself as an administrator on your computer in order to make the necessary setting changes. If you see an icon with a closed padlock, you need to click on it and put in your username and password for your computer to “unlock” the “Network” settings window.



Step 6.

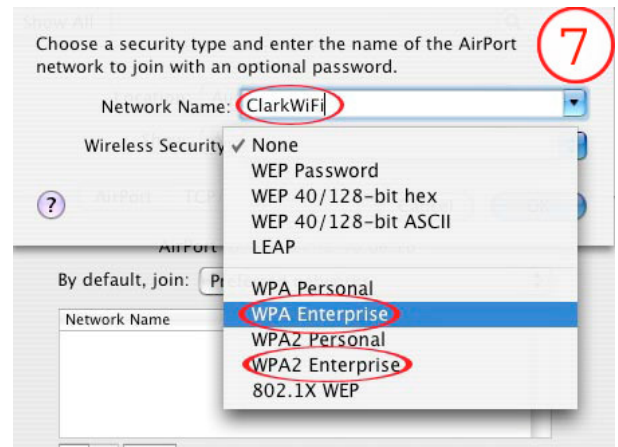
At the bottom of the window, make sure the “Show AirPort status in menu bar” box is checked. Next, look for the “By default, join” menu; click on the selector next to it to open a dropdown menu and choose “Preferred networks”. Click on the “+” to add a preferred network. This will open a new window on top of the “Network” window.



If you have any questions, or require further assistance, please contact the ITS Help Desk at **508.793.7745** or helpdesk@clarku.edu.

Step 7.

In the new window, find the “Network Name:” field. Click within the text field next to it and type in “ClarkWiFi” without the quotation marks; be careful, this is case sensitive. Next, find the “Wireless Security:” menu, click on the dropdown menu, and select “WPA Enterprise” or if you have the option “WPA2 Enterprise”.



Step 8.

The window will now expand to display more options; find the “User Name:” text field. Click in the field and type in your login domain (either STUDENTS or CLARKU), a backslash (\), and then your user. Next, click in the “Password:” text field and type in your Clark Account password. Once you are done, click the “OK” button to return to the “Network” window, then click the “Apply Now” button to save the wireless settings you have configured and close the “Network” Window.



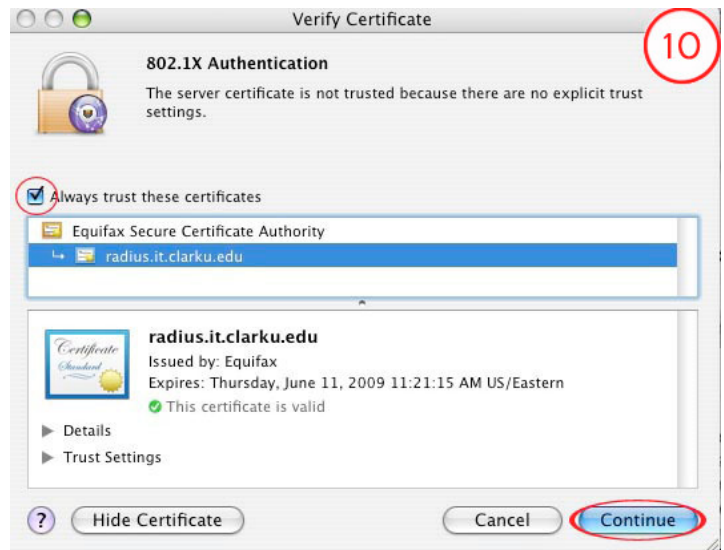
Step 9.

Your computer will now attempt to communicate with the ClarkWifi network and will shortly prompt you with a “Verify Certificate” window. This is a request that you confirm the validity of the wireless certificate that Clark uses to securely encrypt your wireless network traffic. Please click on the “Show Certificate” button which will expand this window.



Step 10.

In the expanded window, check the box next to “Always trust these certificates”. Now, click the “Continue” button to close this window, and complete the log-on process. You should now be connected to the ClarkWiFi wireless network.



Step 11.

Now would be a good time to test your wireless network connection. Please disconnect your computer from any wired network cable that might be connected to your computer, and open an external web page (ex www.google.com) in a web browser. If the wireless configuration has worked correctly, you should see the web page you chose displayed. If the connection failed, you should restart your computer, and try again. If you continue to have trouble, please contact the Help Desk to avoid multiple unsuccessful logins to the wireless network that will lock your Clark Account.