

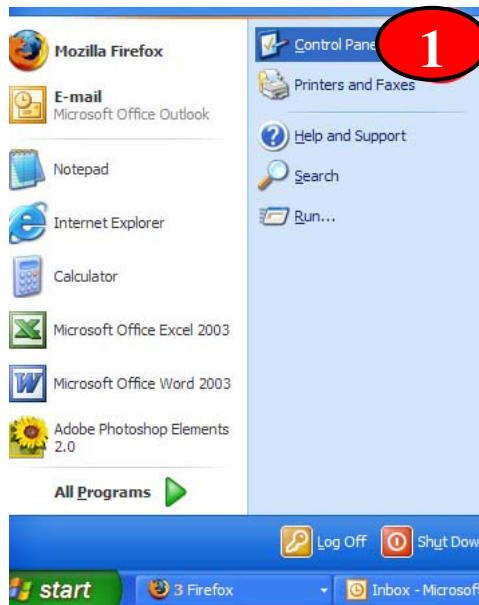
Help Document Series: Accessing ClarkWiFi on Windows XP

The Clark wireless network is known as ClarkWiFi. To connect, you will need a computer with at least a wireless b/g card with updated drivers. Make sure that your wireless card is on before starting.

Optional Step – Enabling WPA2 Support

This step is not necessary to log on to the ClarkWiFi Wireless Network, but it will provide you with a higher level of security for your connection. The ClarkWiFi network supports both WPA and WPA2 security standards; however, Windows XP only supports WPA out of the box. This optional step will enable WPA2 support by downloading and installing a Windows service pack available at http://clarku.edu/its/downloads/WinXP-WPA2_Update.exe. Once it has downloaded, double-click the file to start the installation process. Follow the instructions, which may include a reboot, and you will be able to activate the WPA2 standard during Step 6.

Step 1: Click on the “Start” menu, then select the “Control Panel”. This will open a new window.



Step 2: If you see a window that has “Pick a category” written above the list of icons, click “Switch to Classic View” to view all of the options within the Control Panel window. If not, proceed to step 3.

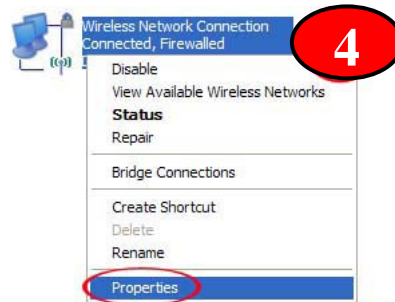
Step 3: Double Click on the “Network Connections” icon and a window will open to display any Local Area and Wireless Network Connections on your computer.



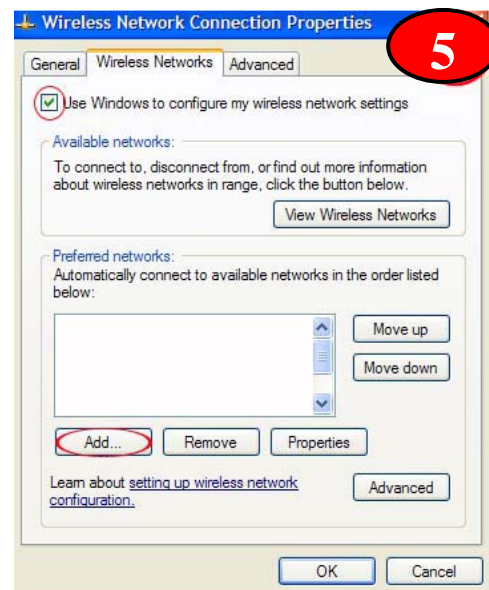
Step 4: In the “Network Connections” window, you will have multiple connections available; look for the “Wireless Network Connection”. There may be a number after the name (ex. Wireless Network Connection 2), the number does not matter; contact the Help Desk if you have multiple icons labeled Wireless Network Connection.

If the icon has a red “X” over it, make sure that your wireless card is turned on. If it has a yellow “!”, make sure that your wireless card drivers are installed properly.

When you are ready, right-click on the Wireless Network Connection icon to bring up a contextual menu, and select “Properties”.



Step 5: A new window will open, labeled “Wireless Network Connection Properties” and it will start off in the “General” tab. First, click the “Wireless Networks” tab to switch to it, and make sure that the box for “Use Windows to configure my wireless network settings” is checked. The “Preferred Networks” box will list all wireless networks that you have connected to in the past. ClarkWiFi will probably not be in this list; if it is, select it and click “Remove”, as it is most likely configured incorrectly. Now click the “Add...” button and you will open the “Wireless network properties” window.



Step 6: The “Wireless network properties” window will begin in the “Association” tab. Type in “ClarkWiFi” (case sensitive) without the quotation marks in the “Network name (SSID)” text field. Below the “Network name (SSID)” box, there are two drop-down menus, “Network Authentication” and “Data Encryption”. There are two configurations you can use for these menus: WPA or WPA2.

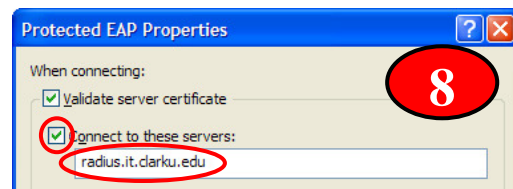
If the “Network Authentication” dropdown menu includes “WPA2”, select it and change the “Data Encryption” menu to “AES” for maximum security. If WPA2 is not available, choose “WPA” under the “Network Authentication” menu and then select “TKIP” under the “Data Encryption”.



Step 7: While still in “Wireless network properties”, click on the “Authentication” tab to select it. In this tab you have one dropdown menu, “EAP type”, it needs to be changed to “Protected EAP (PEAP)”. Now, click the “Properties” button to bring up a new window, “Protected EAP Properties”.



Step 8: In the new window, start by clicking the “Connect to these servers:” check box and type **radius.it.clarku.edu** into the text field.

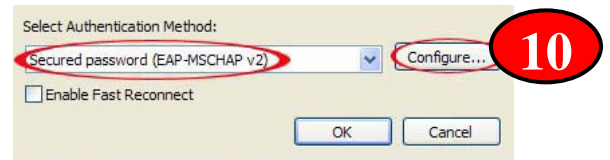


Step 9: Within this window there will be a “Trusted Root Certification Authorities” box; scroll down to the Equifax Certificates, and check the boxes next to all four of them. Next, check the “Enable Fast Reconnect” box at the bottom of the window.



If you have any questions, or require further assistance, please contact the ITS Help Desk at **508-793-7745** or helpdesk@clarku.edu.

Step 10: Next, make sure that the “Select Authentication Method” is set to “Secure password (EAP-MSCHAP v2)” in the dropdown menu. Next, click the “Configure” button to bring up a new window.



Step 11: In the “EAP MSCHAPv2 Properties” window, UNCHECK the box labeled “Automatically use my Windows logon name...”. Click the “OK” button to return to the “Protected EAP Properties” window.



Step 12: Click the “OK” button to return to the “Wireless Network Connection” window and click the “OK” button one more time to save the configuration settings. You can now close the “Network Connections” window.

Step 13: In the task bar in the lower right corner, a dialog box will pop up stating “Click here to select a certificate or other credentials for connection to the network ClarkWiFi”. Click on this box to open a new window labeled “Enter Credentials”.



Step 14: You will now be prompted to enter your Clark Account credentials. Faculty/Staff will need to type “CLARKU” as their “Logon domain:”, and students will need to type “STUDENTS” in the text field. Click the “OK” button, and you will be connected to the ClarkWiFi wireless network.

