

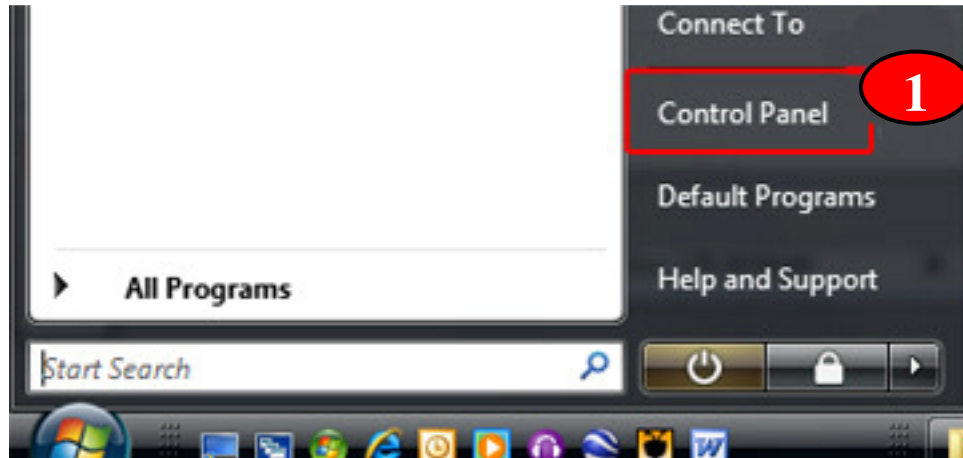


# INFORMATION TECHNOLOGY SERVICES

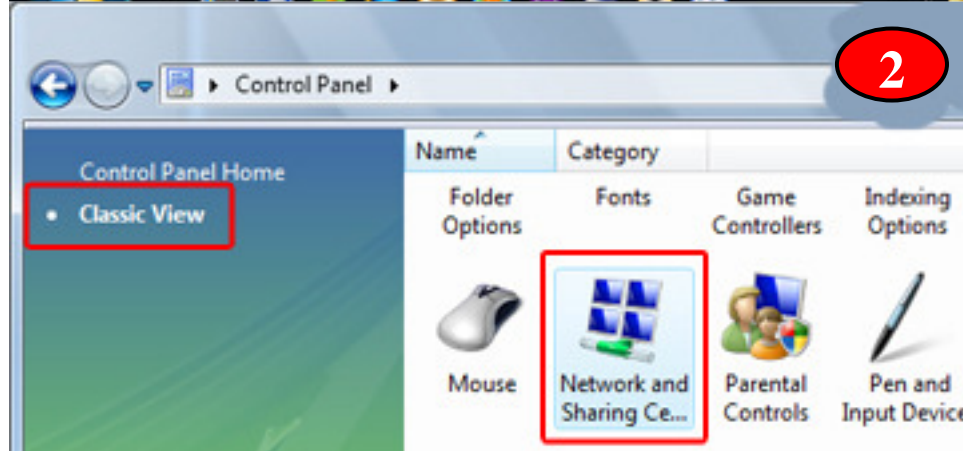
## Help Desk Document Series: Connecting to ClarkWiFi in Windows Vista

*This document will walk you through connecting to ClarkWiFi on Vista PCs.*

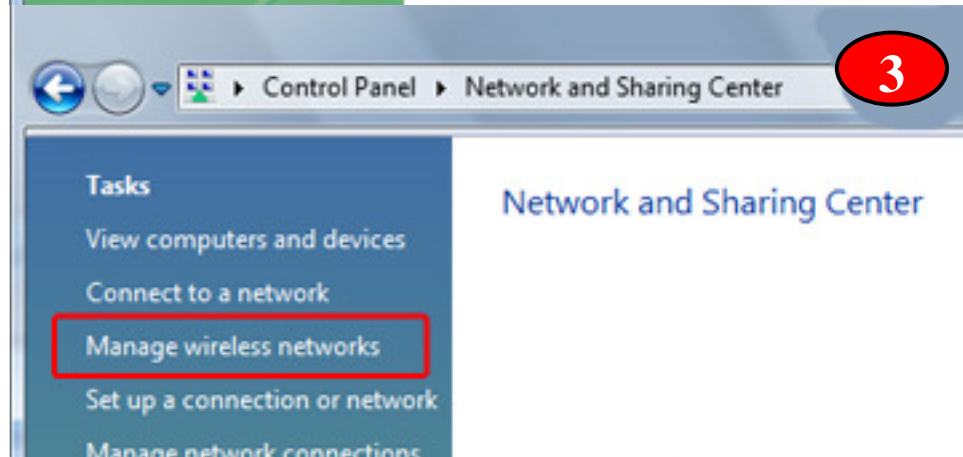
**Step 1**  
Click **Start**, then **Control Panel**.



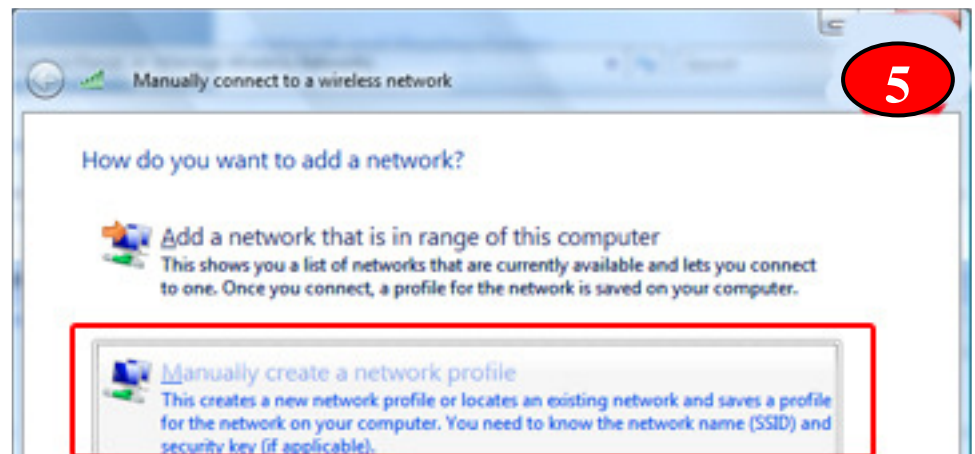
**Step 2**  
Change to **Classic View** by clicking on it. Double-click **Network and Sharing Center** to open it.



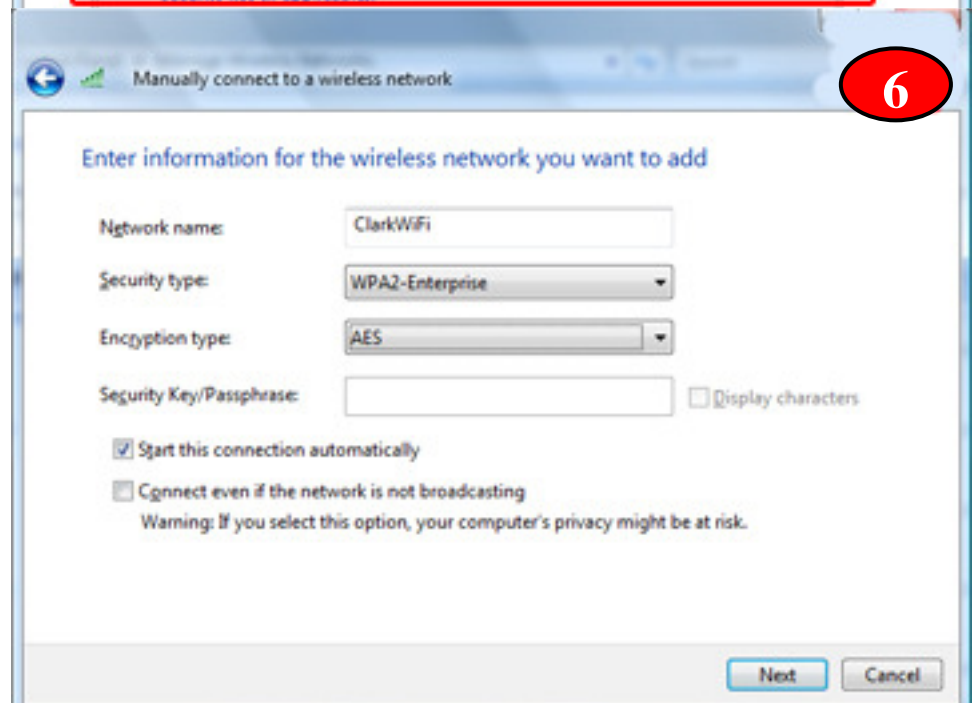
**Step 3**  
Click on **Manage wireless networks**.



If you have any questions, or require further assistance, please contact the ITS Help Desk at 508-793-7745 or [helpdesk@clarku.edu](mailto:helpdesk@clarku.edu).

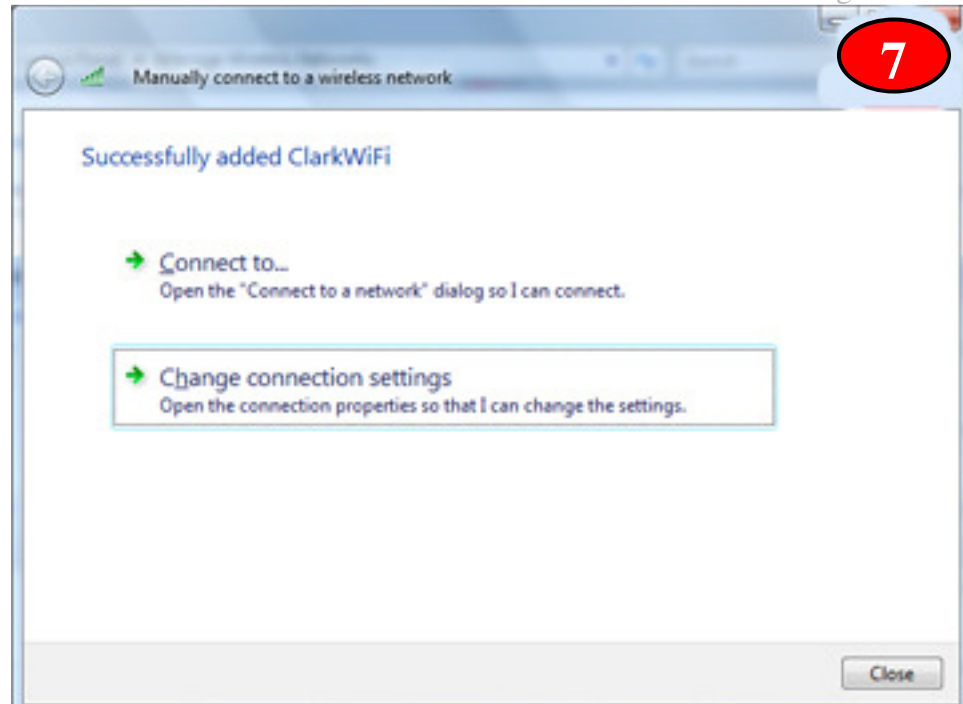
**Step 4**Click on **Add**.**Step 5**Click on **Manually create a network profile**.**Step 6**

Type "ClarkWiFi" in the **Network name:** text field. Open the dropdown **Security type:** menu, and select **WPA2-Enterprise**. This automatically sets the **Encryption type** to **AES**. No **Security key/Passphrase** is required. Click on **Next**.

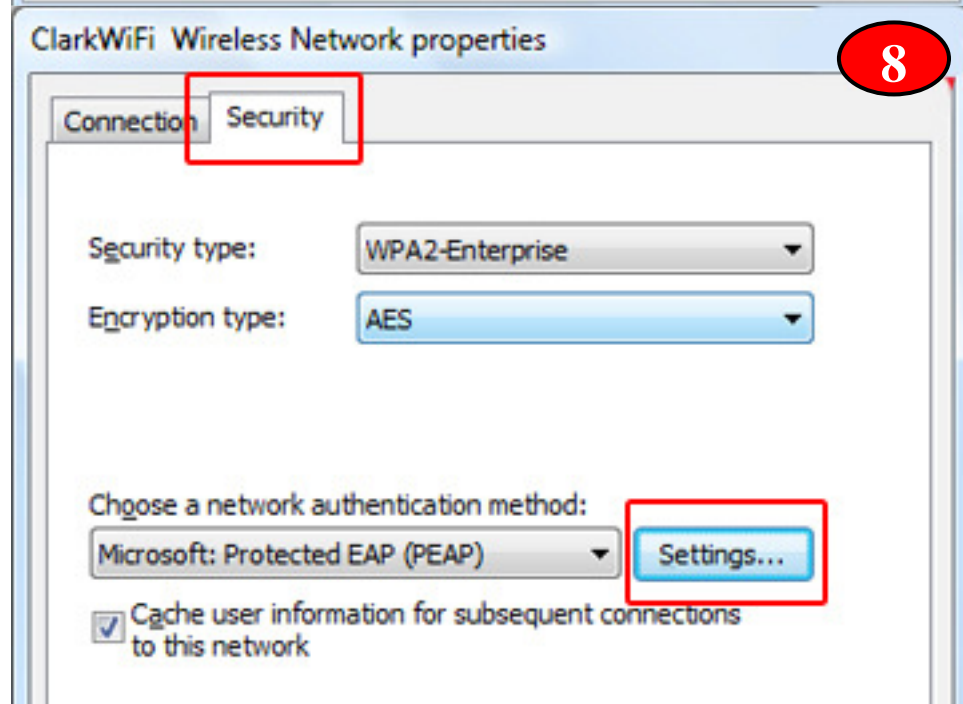


**Step 7**

Now that the profile is created it is necessary to **Change connection settings**.

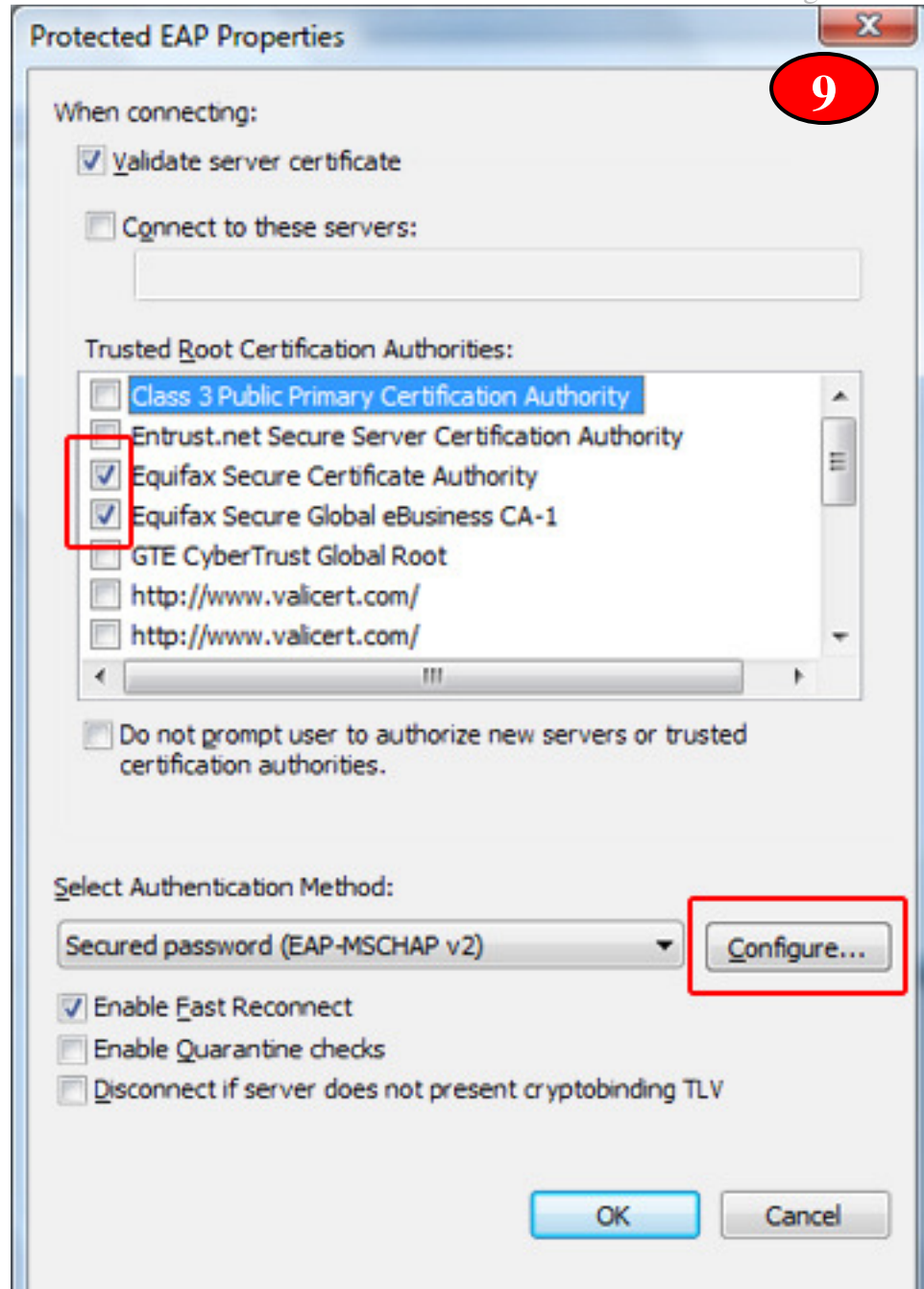
**Step 8**

Switch to the **Security** tab by clicking on it. All of the dropdowns should be set correctly; just click on **Settings...**

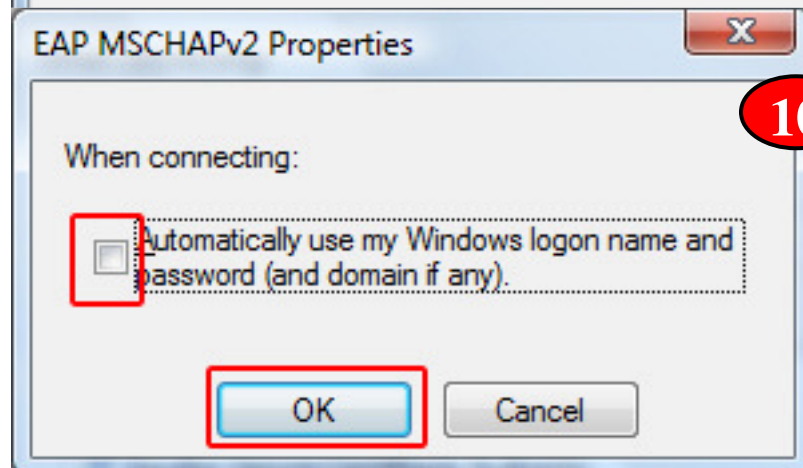


**Step 9**

In most cases, there are going to be two **Equifax** certificates available, and they show up towards the top. Check them, then click **Configure...**

**Step 10**

Uncheck the **Automatically use my Windows logon name and password (and domain if any)** checkbox. Click **OK** until all the windows are closed.



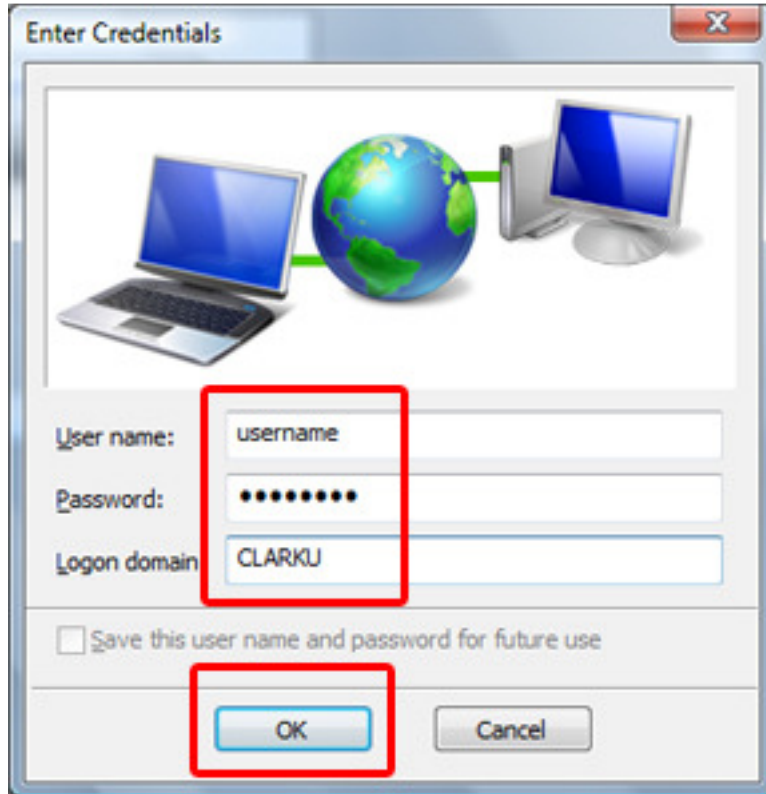
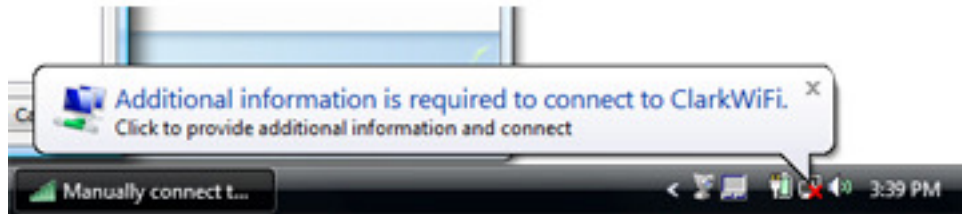
If you have any questions, or require further assistance, please contact the ITS Help Desk at 508-793-7745 or [helpdesk@clarku.edu](mailto:helpdesk@clarku.edu).

**Step 11**

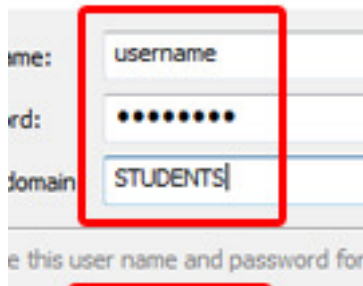
Click on the notification that pops up down by the clock. Depending on the state of the server certificate, you'll get either the **Validate Server Certificate** or **Enter Credentials** windows.

If you get **Validate Server Certificate**, click **OK**. The bubble will pop up again, and you need to click on it again to get to **Enter Credentials**.

11



When you get to **Enter Credentials**, enter your standard Clark Account information (**Logon domain:** will be automatically CAPPED) and click **OK**.



Note: the **Logon domain** for faculty/staff is **CLARKU**; for students it is **STUDENTS**

**Step 12:**

You will receive confirmation that you have connected to the ClarkWiFi network.

