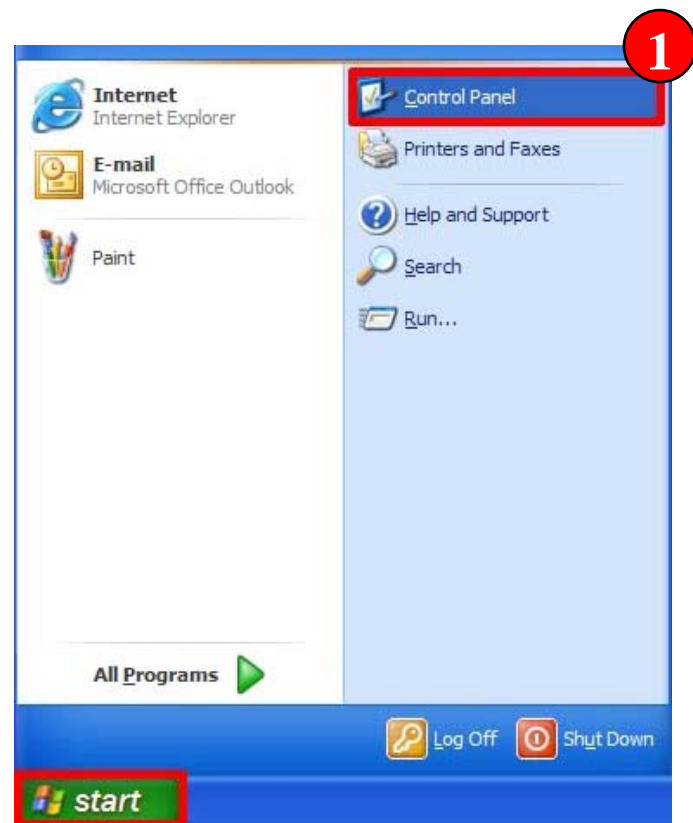


Help Document Series: Setting up DHCP on Windows XP

These instructions will walk you through setting up your computer running Windows XP to use DHCP. This is necessary for your computer to connect to the Clark Network. You will need an active internet connection on the Clark campus.

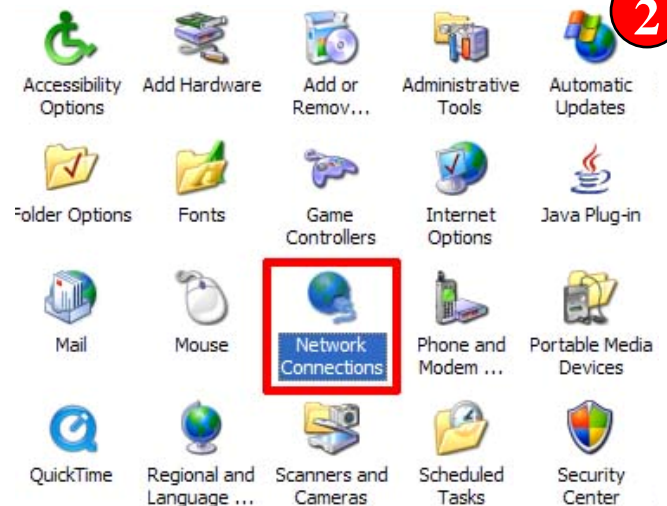
Step 1

Click on the **Start** menu and then click on the **Control Panel**.

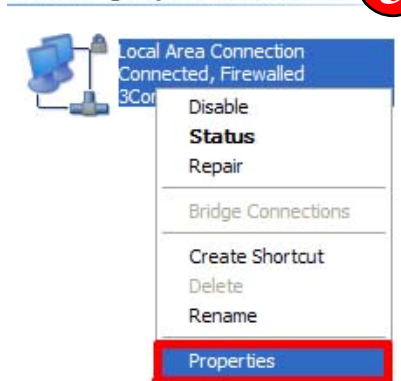


Step 2

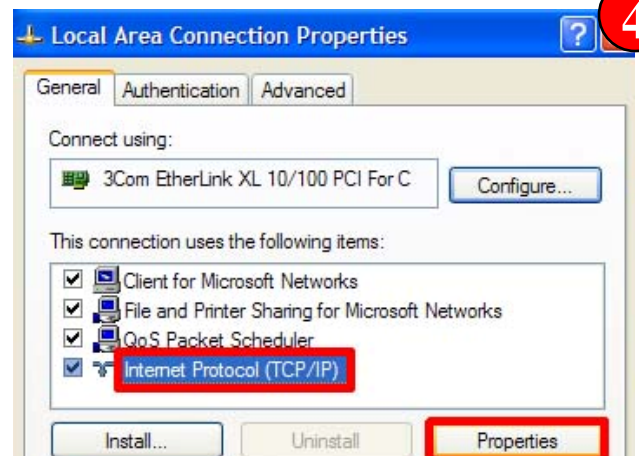
Double-click the **Network Connections** icon within the Control Panel window.

**Step 3**

In the **Network Connections** window, right-click on the **Local Area Connection** icon, and select the **Properties** option from the drop-down menu.

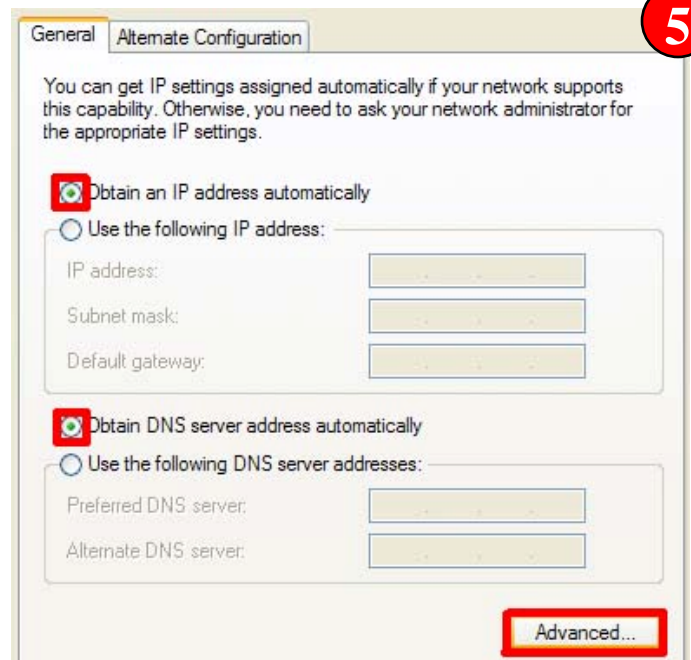
LAN or High-Speed Internet**Step 4**

You will now get a new window named, **Local Area Connection Properties**, and you will want to work in the **General** tab. Select the **Internet Protocol (TCP/IP)** by clicking it once and then click the **Properties** button.



Step 5

The new **Internet Protocol (TCP/IP)** window will display its own **General** tab where you will need to make sure that the **Obtain an IP address automatically** and **Obtain DNS server address automatically** radio buttons are selected. Next, click the **Advanced...** button.

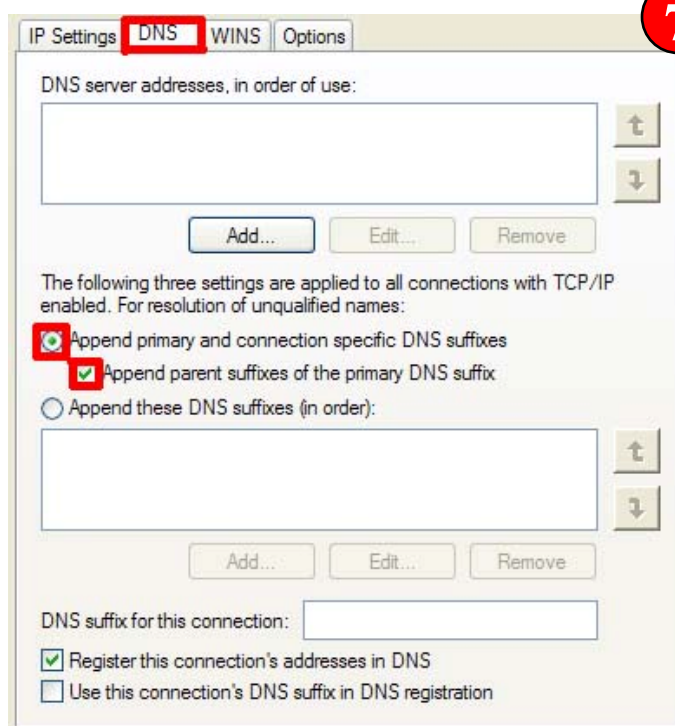
**Step 6**

The **Advanced TCP/IP Settings** window will open on top of the other windows, and under the **IP Settings** tab, make sure that the **IP address** box reads "DHCP Enabled", and that the **Automatic metric** box is checked.



Step 7

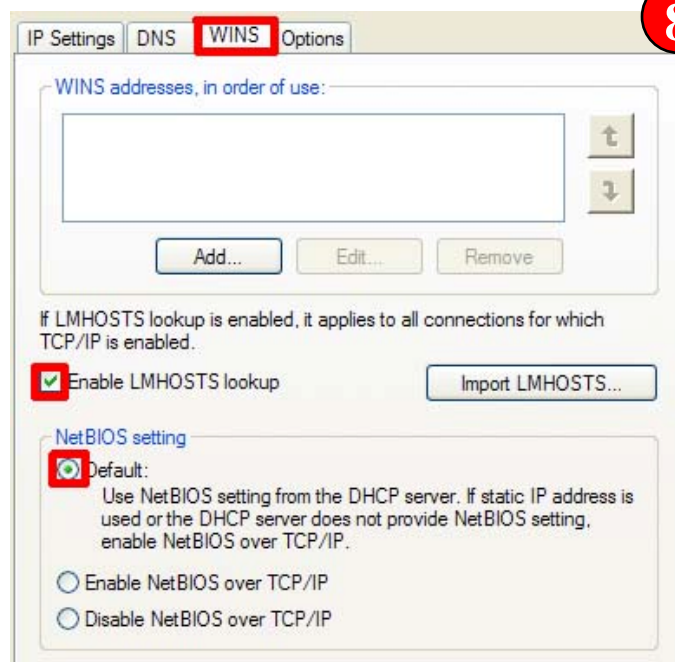
Now, select the **DNS** tab by clicking on it and make sure that **Append primary and connection specific DNS suffixes** radio button is selected, and that **Append parent suffixes of the primary DNS suffix** box is checked. You will also need to make sure that **Register this connection's addresses in DNS** box is also checked.

**Step 8**

Next, select the **WINS** tab by clicking on it. Check to make sure that **Enable LMHOSTS lookup** box is checked, and that under the **NetBIOS setting** section, the **Default:** radio button is selected.

At this point, you are ready to click the **OK** button twice and then the **Close** button in the **Wireless Network Connection Properties** window.

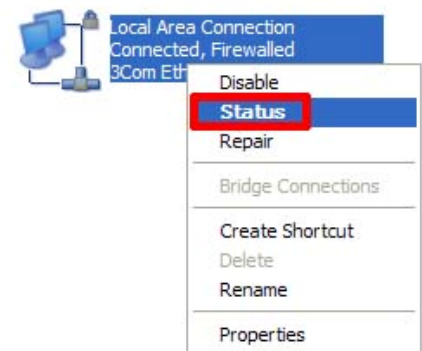
If all of these settings are correctly configured, your computer should now be able to connect to the Clark network. If you are still having trouble, you can try the following troubleshooting.



Troubleshooting

From the **Network Connections** window (see steps 1-2 to get there), right-click on **Local Area Connection** icon and select the **Status** option.

LAN or High-Speed Internet



Your **IP Address:** should start with "140.232.x.x". If it does not, click the **Repair** button, and if there are no error messages, you should receive a valid "140.232.x.x" IP address.

