

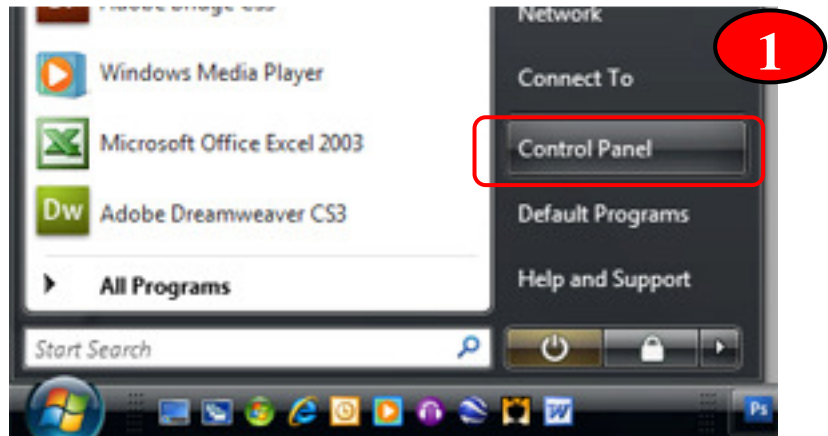


# INFORMATION TECHNOLOGY SERVICES

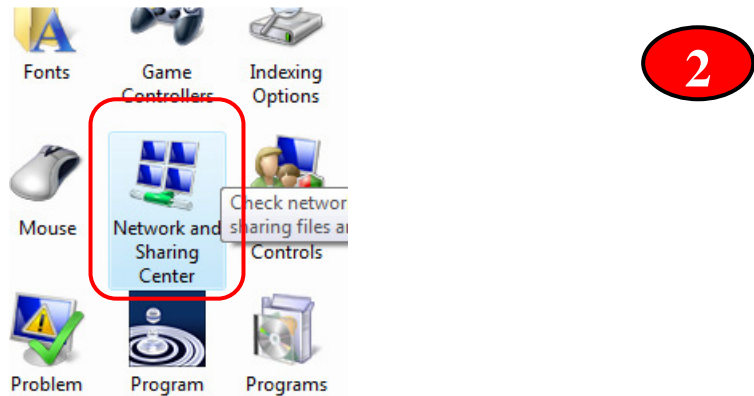
## Help Document Series: Setting up DHCP on Windows Vista

DHCP is necessary for your computer to connect to the Clark Network. You will need an active internet connection on the Clark campus. Please note that in most cases, DHCP will be set up properly by default, meaning that these instructions will allow you to **verify** that the settings are correct.

**Step 1:** Click on the **Start** menu and then click on the **Control Panel**



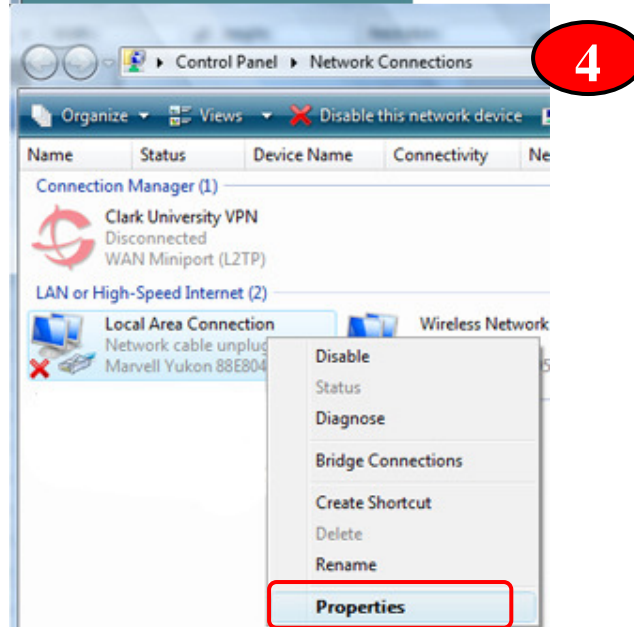
**Step 2:** Double-click the **Network and Sharing Center** icon within the Control Panel window



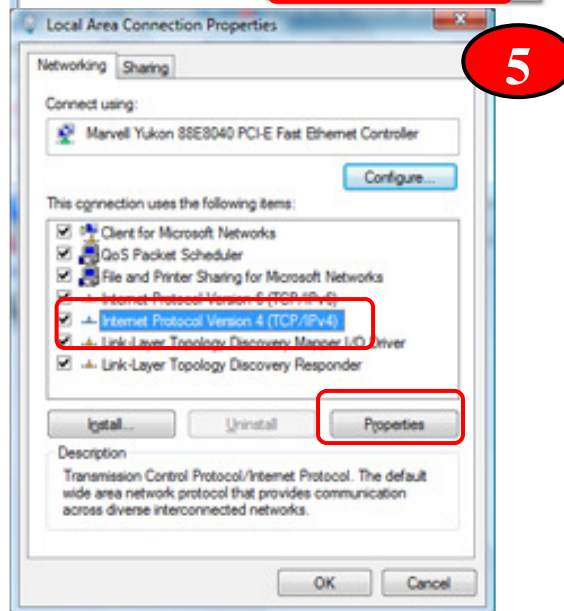
**Step 3: Select Manage Network Connections**



**Step 4: Right-click on the Local Area Connection icon and select Properties**

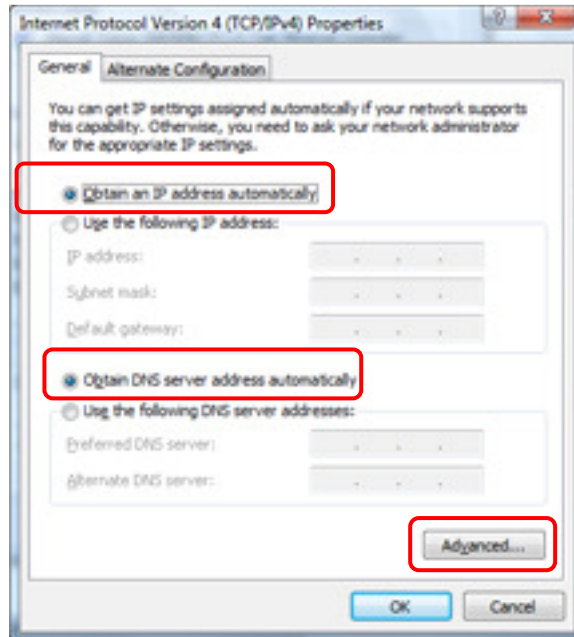


**Step 5: You will now get a new window named Local Area Connection Properties. Select Internet Protocol Version 4 (TCP/IP) by clicking it once and then click the Properties button.**



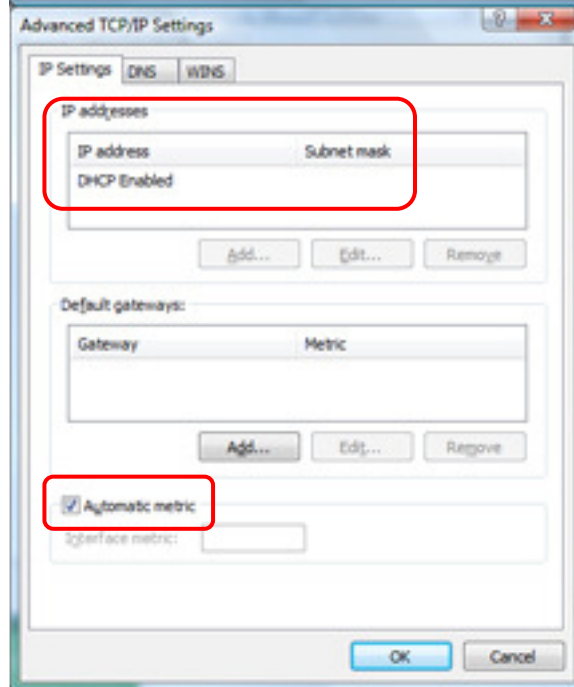
If you have any questions, or require further assistance, please contact the ITS Help Desk at **508-793-7745** or [helpdesk@clarku.edu](mailto:helpdesk@clarku.edu).

**Step 6:** Verify that **Obtain an IP address automatically** and **Obtain DNS server address automatically** radio buttons are selected. Click the **Advanced** button.



6

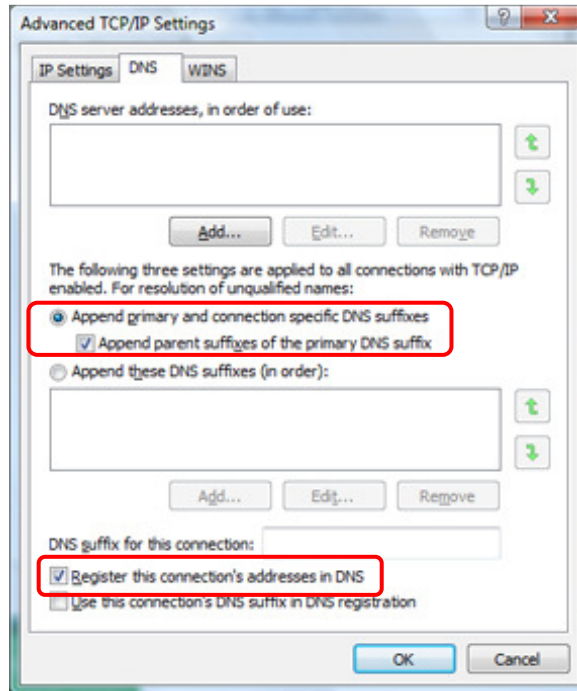
**Step 7:** Make sure that the **IP address** box reads "DHCP Enabled", and that the **Automatic metric** box is checked.



7

If you have any questions, or require further assistance, please contact the ITS Help Desk at **508-793-7745** or [helpdesk@clarku.edu](mailto:helpdesk@clarku.edu).

**Step 8:** Select the **DNS** tab and make sure that **Append primary and connection specific DNS suffixes** radio button is selected, and that **Append parent suffixes of the primary DNS suffix** box is checked. You will also need to make sure that **Register this connection's addresses in DNS** box is also checked.



**Step 9:** Select the **WINS** tab. Check to make sure that **Enable LMHOSTS lookup** box is checked, and that under the **NetBIOS setting** section, the **Default:** radio button is selected.

Click **OK, OK, Close** to back out to the Network Connections window, which you may close.

