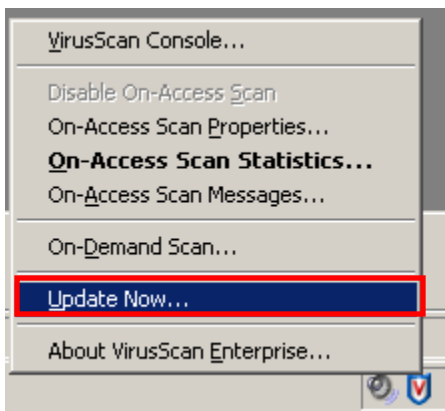


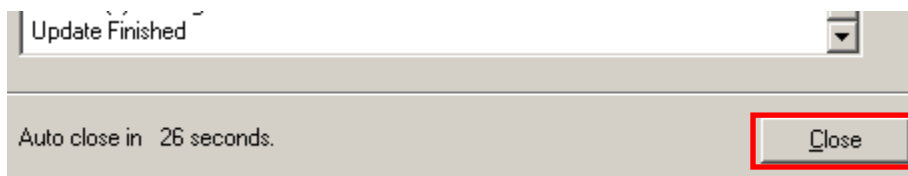
Help Document Series: How to check your DAT version and update McAfee Enterprise 8.5.0i



To check the DAT version Right Click on the McAfee Shield icon and click on “**About VirusScan Enterprise**”. The DAT version will be listed under the “**DAT Created On:**” Field. If the DAT file is more than five days old make sure to update your McAfee Virus scan before running the on demand scan.



Right Click on the McAfee Shield icon located in the windows taskbar located in the bottom right hand corner next to the system clock and select “**Update Now**”.



McAfee will now update. This may take a few moments. When the process is finished you can click the “**close**” button.

Your DAT Creation date should now be as recent as possible.

DAT Version:	5565.0000
DAT Created On:	March 26 2009